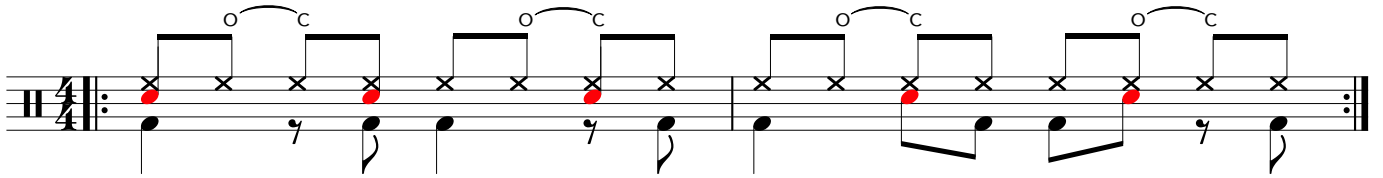
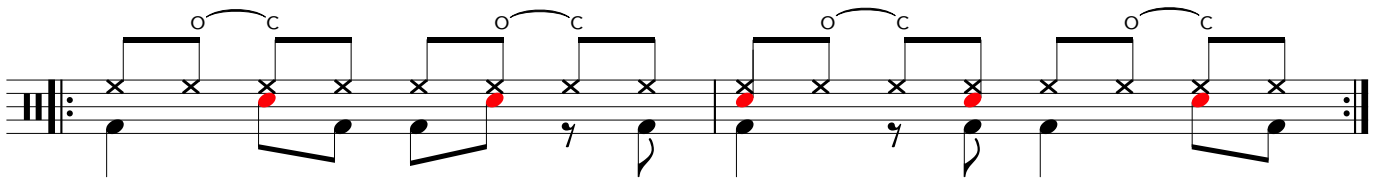


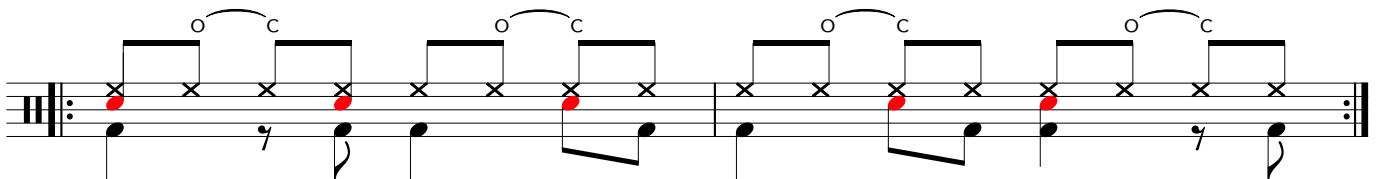
BOSSA NOVA - su Hi Hat con **clave 3+2** (BOSSA)



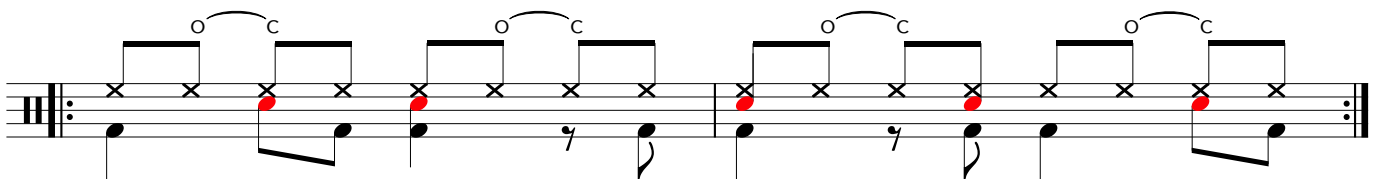
BOSSA NOVA - su Hi Hat con **clave 2+3** (BOSSA)



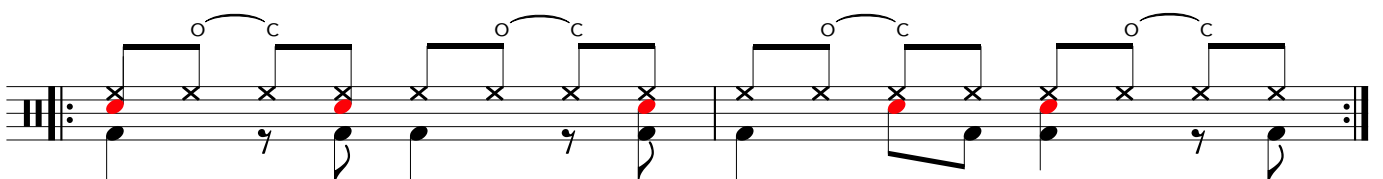
BOSSA NOVA - su Hi Hat con **clave 3+2** (SON)



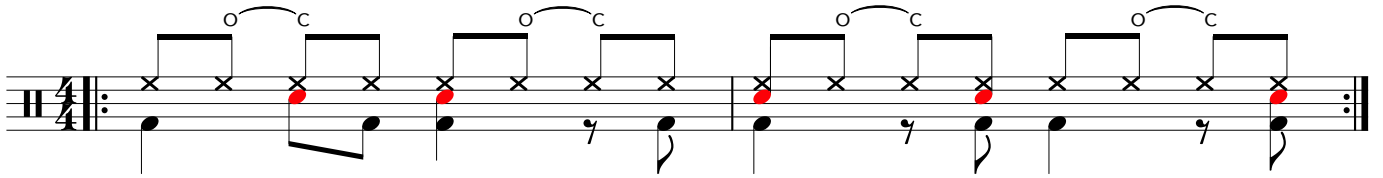
BOSSA NOVA - su Hi Hat con **clave 2+3** (SON)



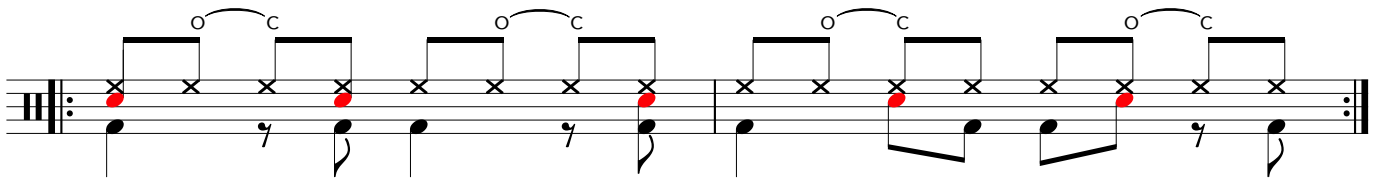
BOSSA NOVA - su Hi Hat con **clave 3+2** (RHUMBA)



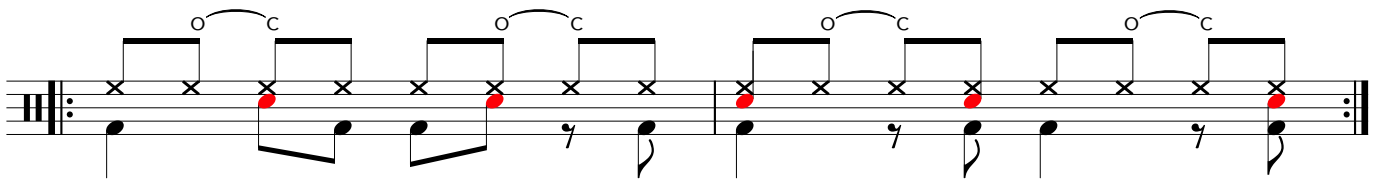
BOSSA NOVA - su Hi Hat con **clave 2+3** (RHUMBA)



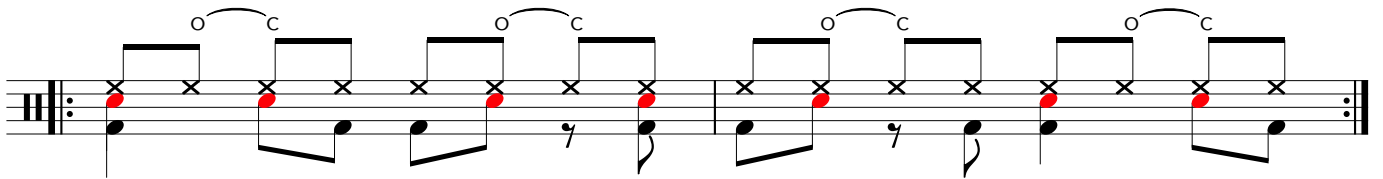
BOSSA NOVA - su Hi Hat con **clave 3+2** (RHUMBA II)



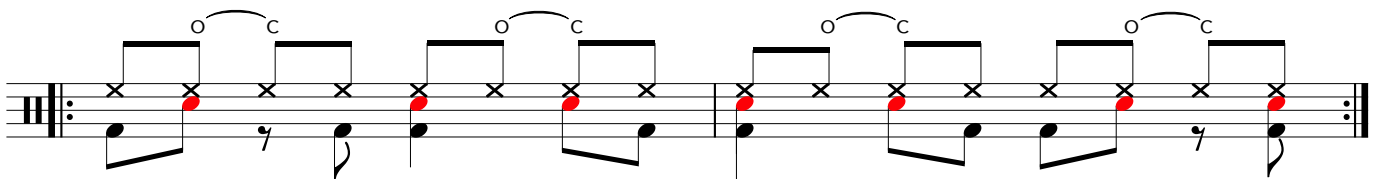
BOSSA NOVA - su Hi Hat con **clave 2+3** (RHUMBA II)



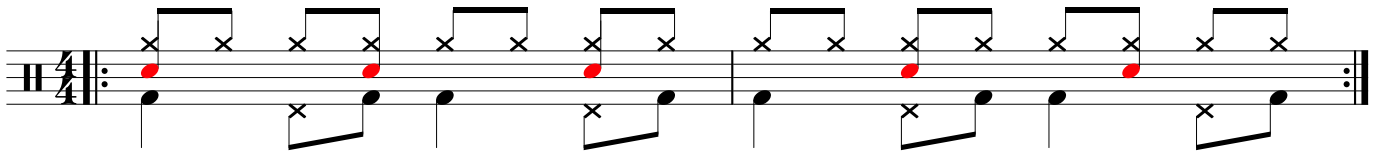
BOSSA NOVA - su Hi Hat con **clave** (SAMBA I)



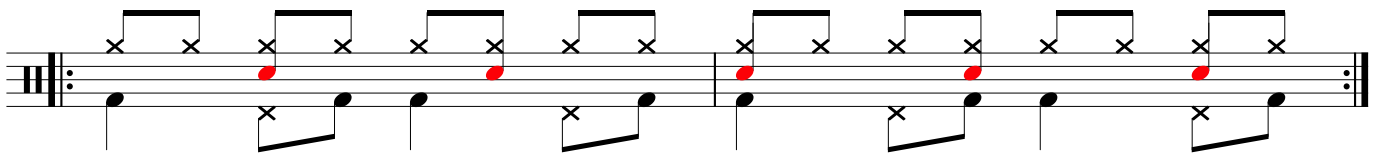
BOSSA NOVA - su Hi Hat con **clave** (SAMBA II)



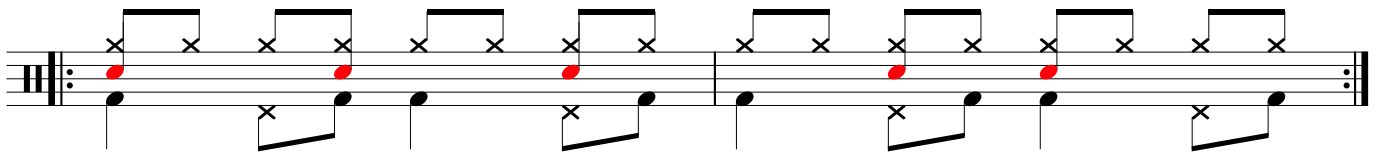
BOSSA NOVA - su Ride con **clave 3+2** (BOSSA)



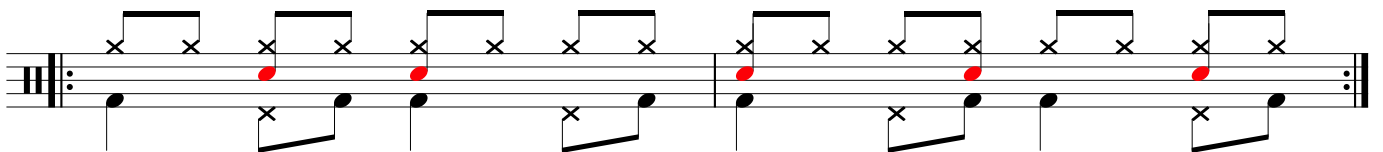
BOSSA NOVA - su Ride con **clave 2+3** (BOSSA)



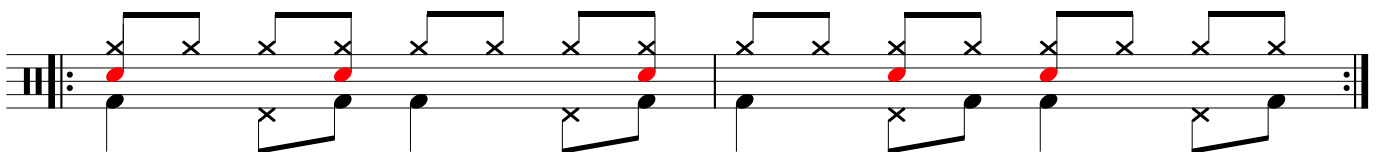
BOSSA NOVA - su Ride con **clave 3+2** (SON)



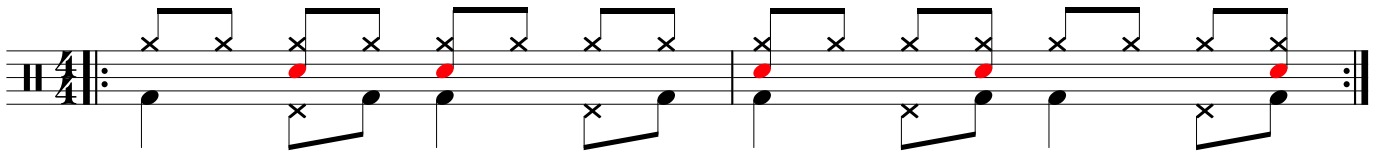
BOSSA NOVA - su Ride con **clave 2+3** (SON)



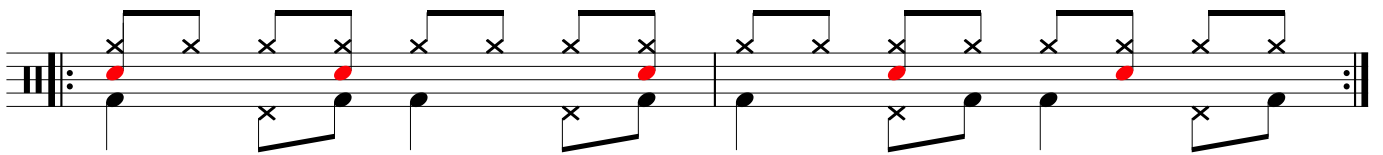
BOSSA NOVA - su Ride con **clave 3+2** (RHUMBA)



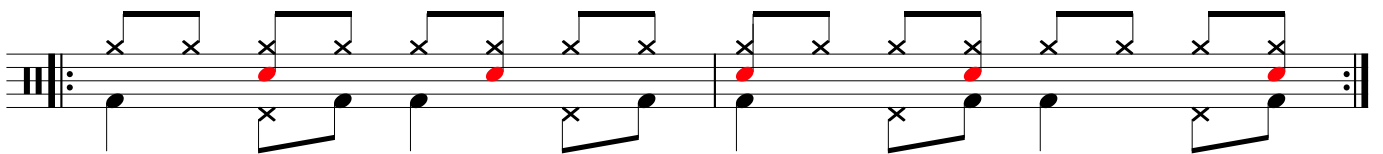
BOSSA NOVA - su Ride con **clave 2+3** (RHUMBA)



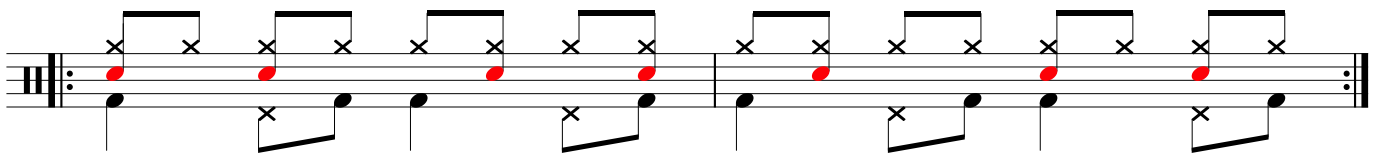
BOSSA NOVA - su Ride con **clave 3+2** (RHUMBA II)



BOSSA NOVA - su Ride con **clave 2+3** (RHUMBA II)



BOSSA NOVA - su Ride con **clave** (SAMBA I)



BOSSA NOVA - su Ride con **clave** (SAMBA II)

